



ASSESSMENT OF THE ORAL HEALTH CARE NEEDS OF INTERNALLY DISPLACED PERSONS AT IDP's CAMPS IN MANGU LOCAL GOVERNMENT AREA, PLATEAU STATE, NIGERIA



AUTHOR: JOHNSON TITUS BISANI
Faculty of Dental Sciences, College of Health Sciences,
University of Jos

INTRODUCTION

Internally displaced persons (IDPs) are individuals forced to flee their homes due to conflict, violence, or natural disasters, but remain within their country's borders. The fundamental requirements for good health are severely threatened for them. Holistic health which includes oral health, is essential for the overall well-being of any individual. This study aimed to assess the oral health status of internally displaced persons, associated oral health practices and oral health treatment needs.

OBJECTIVE

This study assessed oral health challenges among IDPs in Mangu camp, evaluating their oral health status, practices, and treatment needs.

METHODOLOGY

This was a descriptive cross-sectional study. Interviewer-administered questionnaires were used to collect sociodemographic data and oral health behavior from participants in the internally displaced persons'camp in Mangu Local Government Area in Plateau State, Nigeria. Oral examination using the simplified oral hygiene index OHI-S and DMFT/dmft index was used to assess oral hygiene and caries experience of study participants.

RESULTS

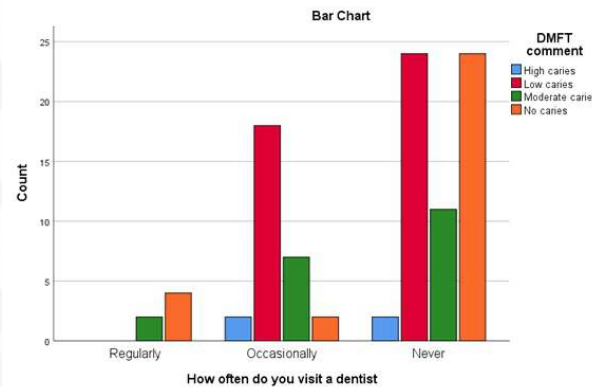
A total of 96 persons were recruited for the study made up of 29 males and 67 females giving a male to female ratio of 1: 2.3. Approximately half of the study participants brush their teeth daily (51%). About 47.9% had to travel to the neighboring towns to access oral health care services while 6.3% just rely on locally available remedies for their oral health problems. In the study, 37.5% and 52.1% reported having toothache and gum bleeding respectively. In addition, 40.6% complained of having difficulty chewing food leading dietary restrictions. Non-exposure to oral health

education was reported by 74.0% of the participants. A total of 6.3% of the study participants had poor oral hygiene and the prevalence of caries 68.8%. Participants with a history of dental visit had lower DMFT scores ($X^2 = 16.02, df = 6, p = 0.014$).

TABLE 1- SOCIO-DEMOGRAPHIC CHARACTERISTICS OF THE STUDY POPULATION N=96

Variable	Number	Percentage(%)
Age(years)		
0-10	14	14.6
11-20	8	8.3
21-30	10	10.4
31-40	16	16.7
41-50	16	16.7
51-60	14	14.6
61-70	9	9.4
71-80	5	5.2
81-90	4	4.2
Sex		
Male	29	30.2
Female	67	69.8
Marital status		
Single	28	29.2
Married	58	60.4
Widowed	8	8.3
Divorced	2	2.1
Level of education		
Primary	42	43.8
Secondary	31	32.3
Tertiary	8	8.3
None	15	15.6

TEST OF ASSOCIATION BETWEEN DENTIST VISIT AND THE DMFT INDEX



CONCLUSION

There is a dire need for oral health care in the IDP camp as access to oral health is inadequate and unmet oral health care needs is high. In addition, health promotional activities to improve oral health knowledge and behavior of this disadvantaged group are recommended.

Keywords: Oral Health Care Needs, Internally Displaced Persons, Oral Hygiene, Caries, Plateau State

ACKNOWLEDGMENT

- Alliance for Oral Health Across Borders (AOHAB) Project Mentors: Dr. Allen Wong and Dr. Tessa Waldhart.
- Project Supervisors: Prof. Benjamin Akhiwu, Dr. Priscilla Okhiabigie Ameh, Dr. Taiwo, Olaniyi, Dr. Ukachi Chiwendu Nnawuihe, Dr. Basil, Tochukwu Ojukwu



SUPPORTED BY

